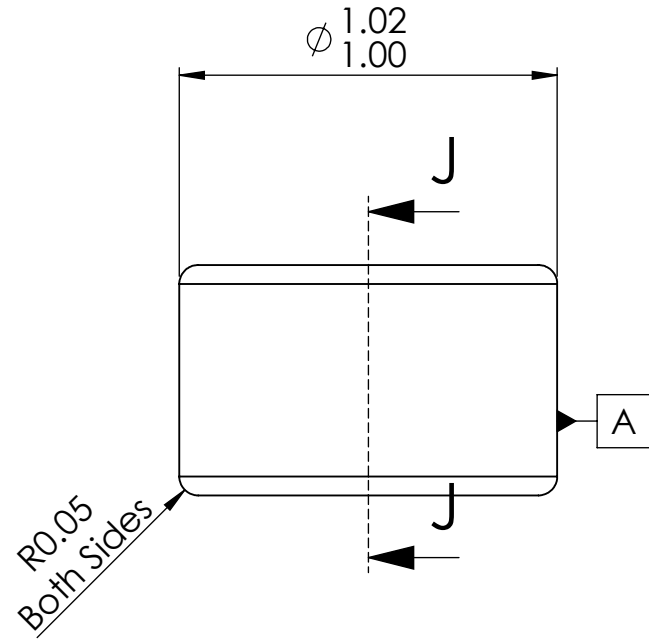



SECTION J-J



Notes:

1. Lower half of vee and radius to be free of defects visibal with 30X magnification.

Microlap Technologies Inc. 	Dimensions are all in mm		DWG. NO.	MT4005
	DRAWN	NAME	DATE	DWG. Name.
213 1st ST NW - POBOX 280 Rolla, ND 58367 701-477-3193(P) - 701-477-6579 (F) WWW.microlap.com	CHECKED	DG	4/22/2013	MT4005
	MFG APPR.	JL	4/20/2013	
	Q.A.	SG	4/23/2013	
MATERIAL Sapphire			SIZE	
PROPRIETARY AND CONFIDENTIAL <small>This drawing and the information contained in the specifications are the exclusive and proprietary property of Microlap Technologies, Inc. This information and materials shall not be disclosed, divulged, reproduced, copied or used in any manner without the express written authorization of Microlap Technologies, Inc. All copies, reproductions, or other duplications of any portion of this information or materials shall include this legend.</small>			FINISH	REV.
DO NOT SCALE DRAWING			Vee & vee side flat: 0.1 micrometers All other surfaces: 0.8 micrometers	A
			SCALE:50:1	WEIGHT:
			SHEET 1 OF 1	