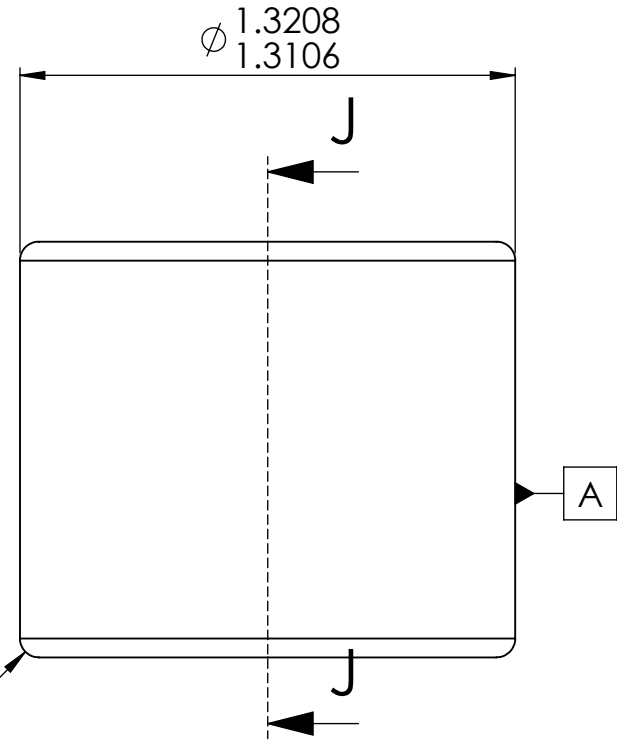



SECTION J-J

R0.05 Approx.
Both Sides



Notes:

1. Lower half of vee and radius to be free of defects visibal with 30X magnification.

Microlap Technologies Inc.		Dimensions are all in mm		DWG. NO.	MT4011	
		DRAWN	MJA	4/2/2013	DWG. Name.	MT4011
 213 1st ST NW - POBOX 280 Rolla, ND 58367 701-477-3193(P) - 701-477-6579 (F) WWW.microlap.com		CHECKED	DG	4/22/2013		
		MFG APPR.	JL	4/20/2013	REV.	
PROPRIETARY AND CONFIDENTIAL <small>This drawing and the information contained in the specifications are the exclusive and proprietary property of Microlap Technologies, Inc. This information and materials shall not be disclosed, divulged, reproduced, copied or used in any manner without the express written authorization of Microlap Technologies, Inc. All copies, reproductions, or other duplications of any portion of this information or materials shall include this legend.</small>		Q.A.	SG	4/23/2013	Description: Vee Jewel	
DO NOT SCALE DRAWING		MATERIAL Sapphire FINISH Vee & vee side flat: 0.1 micrometers All other surfaces: 0.8 micrometers		SCALE:50:1	WEIGHT:	SHEET 1 OF 1