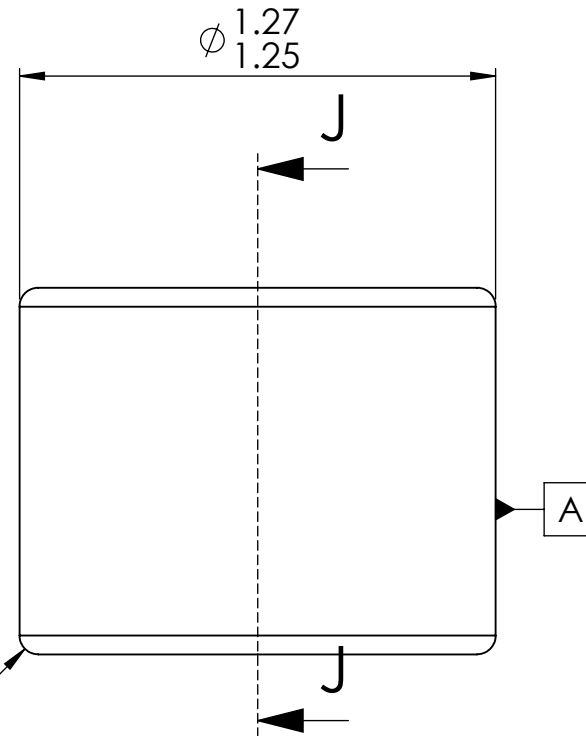



SECTION J-J

R0.05 Approx.
Both Sides



Notes:

1. Lower half of vee and radius to be free of defects visibal with 30X magnification.

Microlap Technologies Inc. 		Dimensions are all in mm		DWG. NO.	MT4013
		DRAWN	MJA	4/2/2013	DWG. Name.
CHECKED	DG	4/22/2013			
MFG APPR.	JL	4/20/2013			
Q.A.	SG	4/23/2013			
PROPRIETARY AND CONFIDENTIAL <small>This drawing and the information contained in the specifications are the exclusive and proprietary property of Microlap Technologies, Inc. This information and materials shall not be disclosed, divulged, reproduced, copied or used in any manner without the express written authorization of Microlap Technologies, Inc. All copies, reproductions, or other duplications of any portion of this information or materials shall include this legend.</small>		MATERIAL Sapphire		SIZE	A
		FINISH Vee & vee side flat: 0.1 micrometers All other surfaces: 0.8 micrometers		Description: Vee Jewel	
DO NOT SCALE DRAWING		SCALE:50:1	WEIGHT:	SHEET 1 OF 1	