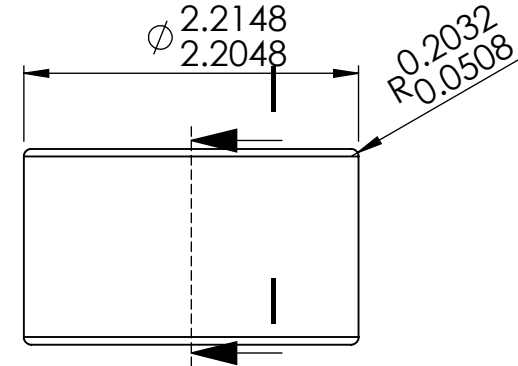


SECTION H-I



Notes:

Dash	"A"	Job No.
-1	.1295/.1346	JA1065
-2	.1600/.1650	JA1143
-3	.2438/.2489	JA1164
-4	.1778/.1829	
-5	.3531/.3581	JA1112
-6	.6325/.6375	
-7		
-8	.3785/.3835	JA1113
-9	.3988/.4038	JA1202
-10		
-11	.7087/.7137	JA1184

DWG. NO. See Chart

DWG. Name. See Chart

FINISH:  
Face & Radius: 0.1 micrometers  
Balance as machined

MATERIAL: Sapphire

Dimensions are all in mm

	NAME	DATE
DRAWN	CS	2/10/15
CHECKED	DG	2/12/15
MFG APPR.	JL	2/10/15
Q.A.	SG	2/12/15

SIZE: A Description: Barhole Vee REV: A  
Microlap Technologies Inc.



PROPRIETARY AND CONFIDENTIAL  
This drawing and the information contained in the specifications are the exclusive and proprietary property of Microlap Technologies, Inc. This information and materials shall not be disclosed, divulged, reproduced, copied or used in any manner without the express written authorization of Microlap Technologies, Inc. All copies, reproductions, or other duplications of any portion of this information or materials shall include this legend.  
SCALE:20:1 DO NOT SCALE DRAWING SHEET 1 OF 1