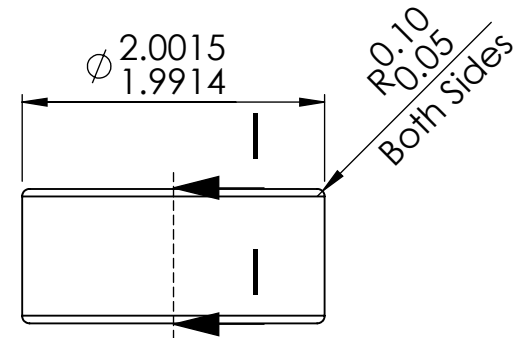
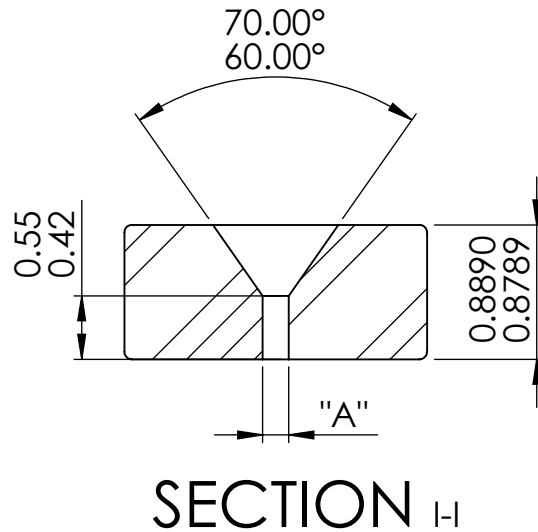


|      |         |             |
|------|---------|-------------|
| Dash | Job No. | "A"         |
| -1   | MT4041  | .1499/.1549 |
| -2   | MT4042  | .1753/.1803 |



**Notes:**

- 1.) Surface Finish: O.D. & Flat - Ground  
 I.D. - best effort for best finish possible  
 V Flat - .05 micrometers R.A.  
 Vee - polished to allow for visual inspection of material flaws, cracks etc.
- 2.) CC: I.D. to Vee - .0203 max.
- 3.) Perp: I.D. to V flat - 0.127 max

DWG. NO. **SEE CHART**

DWG. Name. **SEE CHART**

|                                   |                    |          |
|-----------------------------------|--------------------|----------|
| SIZE                              | Description:       | REV.     |
| <b>A</b>                          | <b>Barhole Vee</b> | <b>A</b> |
| <b>Microlap Technologies Inc.</b> |                    |          |

|  |  |  |
|--|--|--|
|  | 213 1st ST NW - POBOX 280<br>Rolla, ND 58367<br>701-477-3193(P) - 701-477-6579 (F)<br>WWW.microlap.com |  |
|  | <b>PROPRIETARY AND CONFIDENTIAL</b>  |  |

FINISH:  
**Face & Radius: 0.1 micrometers**  
**Balance as machined**

MATERIAL: **Sapphire**

| Dimensions are all in mm |      |          |
|--------------------------|------|----------|
|                          | NAME | DATE     |
| DRAWN                    | CS   | 2/11/15  |
| CHECKED                  | DG   | 02232015 |
| MFG APPR.                | JL   | 2/23/15  |
| Q.A.                     | SG   | 2/23/15  |

SCALE:20:1    DO NOT SCALE DRAWING    SHEET 1 OF 1