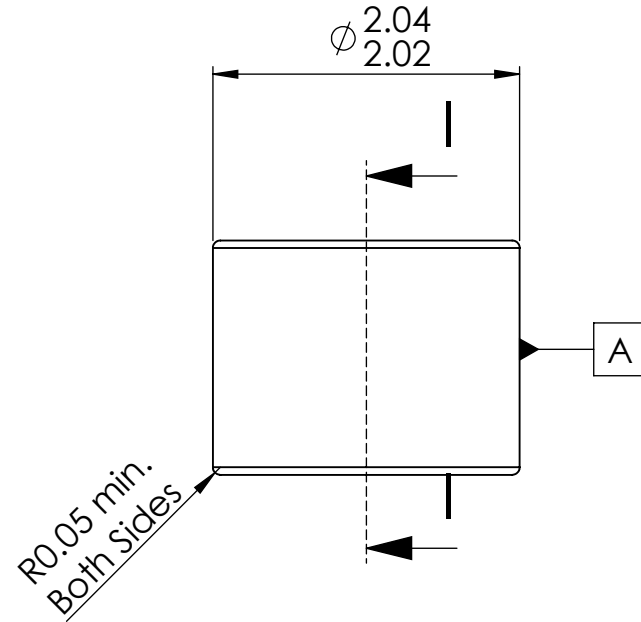



SECTION I-I



Notes:

1. Lower half of vee and radius to be free of defects visible at 30X magnification.

<b>Microlap Technologies Inc.</b>		Dimensions are all in mm		DWG. NO. MT4056		
		DRAWN	MJA	4/26/2012	DWG. Name.	
 213 1st ST NW - POBOX 280 Rolla, ND 58367 701-477-3193(P) - 701-477-6579 (F) WWW.microlap.com		CHECKED	BW	5/18/2012	MT4056	
		MFG. APPR.	JL	5/12/2012		
		Q.A.	SG	5/21/2012		
		PROPRIETARY AND CONFIDENTIAL <small>This drawing and the information contained in the specifications are the exclusive and proprietary property of Microlap Technologies, Inc. This information and materials shall not be disclosed, divulged, reproduced, copied or used in any manner without the express written authorization of Microlap Technologies, Inc. All copies, reproductions, or other duplications of any portion of this information or materials shall include this legend.</small>		MATERIAL Sapphire FINISH Vee & Vee side flat: 0.1 micrometers All other surfaces: 0.8 micrometers		SIZE <b>A</b>
DO NOT SCALE DRAWING		SCALE:20:1	WEIGHT:	SHEET 1 OF 1		