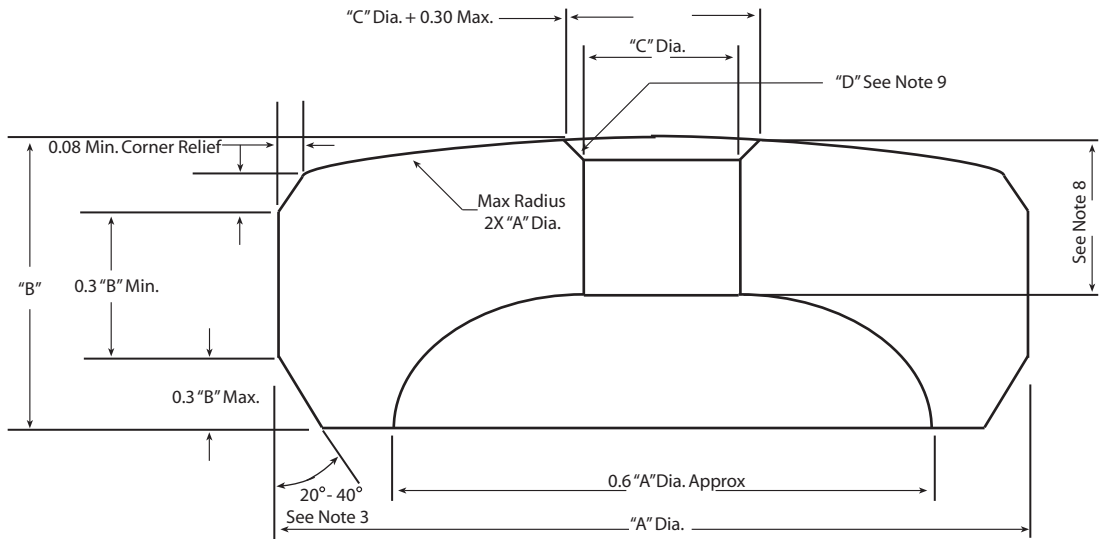


Revisions			
Rev.	Description	Date	Approved

MS-27049
 Drawing No.: _____ Rev.: _____



Notes:

1. All dimensions in mm unless otherwise noted.
2. Drawing not to scale.
3. Chamfer shape at the option of the jewel manufacturer.
4. Break all sharp corners except the intersection of cup and flat surface must be well defined.
5. Diameter's "A" and "C" to be round within 0.005
6. Diameter's "A" and "C" to be concentric within 0.01
7. Flat on cup side must be large enough to align jewel in its setting.
8. Depth and shape of cup is at the option of the manufacturer, but the length of the hole may not exceed DIA "C" nor be less than 1/3 DIA "C".
9. "D" Min. Dimension clearance for pivot fillet radius. Shape at the option of the jewel manufacturer.
10. The bombe must be uniform.
11. High point of the bombe to be concentric to Dia. "C" within 0.03

MS Part No.	A		B		C		D		
	Inches	MM	Inches	MM	Inches	MM	MM		
-3	0.040	1.01-1.02	0.010	0.22-0.26	0.0040	0.100-0.104	0.02 to 0.08		
-5	0.050	1.26 to 1.27	0.0125	0.29 to 0.34	0.0048	0.120-0.124			
-7					0.0063	0.160-0.164			
-9					0.0080	0.200-0.204			
-11	0.0100	0.254-0.259	0.020	0.45 to 0.50	0.0125	0.318-0.323	0.06 to 0.12		
-13	0.0625	1.59 to 1.60			0.0157	0.398-0.403			
-14					0.0183	0.465-0.470			
-14A	0.0200	0.508-0.513			0.031	0.75 to 0.80		0.0250	0.635-0.640
-15	0.080	2.03 to 2.04						0.0313	0.794-0.800
-16	0.100	2.525 to 2.540	0.0400	1.019-1.025					
-17	0.156	3.95 to 3.97	0.031	0.75 to 0.80	0.0500	1.269-1.275	0.09 to 0.15		
-18					0.0625	1.5875-1.5950			
-19					0.0800	2.0300-2.0375			
-20	0.100	2.525 to 2.540	0.031	0.75 to 0.80	0.0400	1.019-1.025	0.09 to 0.15		
-21	0.156	3.95 to 3.97	0.031	0.75 to 0.80	0.0625	1.5875-1.5950	0.09 to 0.15		
-22	0.200	5.080 to 5.090	0.040	1.019 to 1.025	0.0800	2.0300 to 2.0375	0.12 to 0.15		


 213 1st ST NW - PO Box 280
 Rolla, ND 58367
 701-477-3193 (P) - 701-477-6579 (F)
 www.microlap.com

MS-27049
 Drawing No.: _____ Rev.: _____

Proprietary and Confidential

This drawing and the information contained in the specifications are the exclusive and proprietary property of Microlap Technologies, Inc. This information and materials shall not be disclosed, divulged, reproduced, copied or used in any manner without the express written authorization of Microlap Technologies, Inc. All copies, reproductions, or other duplications of any portion of this information or materials shall include this legend.

Bearing, Jewel - Bar Hole, Bombe Military Standard	
See Notes	Ruby/Sapphire
Finish Requirements:	Material:
cg Drawn By:	dv Approved By:
5/2008 Date:	6/2008 Date: