

SECTION H-H

Notes:

1. Vee side to visually flat.
2. Edges to be round (visually) and free of scratches.
3. No chips, scratches or internal defects allowed around the ID of the part.

DWG. NO. SEE CHART

DWG. Name. Orifice

SIZE	Description:	REV.
A	Orifice	A

Microlap Technologies Inc.



FINISH:
Vee & Vee side - Polish 2X
ID & Flat Side - Polish 20X
OD - Ground

MATERIAL: **RUBY**

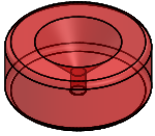
Dimensions are all in mm

	NAME	DATE
DRAWN	MJA	4/24/2019
CHECKED	DG	12/5/2019
MFG APPR.	CA	12/5/2019
Q.A.	DA	12/5/2019

PROPRIETARY AND CONFIDENTIAL

This drawing and the information contained in the specifications are the exclusive and proprietary property of Microlap Technologies, Inc. This information and materials shall not be disclosed, divulged, reproduced, copied or used in any manner without the express written authorization of Microlap Technologies, Inc. All copies, reproductions, or other duplications of any portion of this information or materials shall include this legend.

SCALE:20:1	DO NOT SCALE DRAWING	SHEET 1 OF 2
------------	----------------------	--------------



	"A"	Size in Inch	Coutersink "B"
MT3102	0.0458 - 0.0558	0.002	0.004 - 0.007
MT3103	0.0712 - 0.0812	0.003	0.004 - 0.007
MT3104	0.0966 - 0.1066	0.004	0.004 - 0.007
MT3105	0.1220 - 0.1320	0.005	0.004 - 0.007
MT3106	0.1474 - 0.1574	0.006	0.004 - 0.007
MT3107	0.1728 - 0.1828	0.007	0.004 - 0.007
MT3108	0.1980 - 0.2082	0.008	0.004 - 0.007
MT3109	0.2236 - 0.2336	0.009	0.009 - 0.012
MT3110	0.2490 - 0.2590	0.010	0.009 - 0.012
MT3111	0.2744 - 0.2844	0.011	0.009 - 0.012
MT3112	0.2998 - 0.3098	0.012	0.009 - 0.012
MT3113	0.3252 - 0.3352	0.013	0.009 - 0.012
MT3114	0.3506 - 0.3606	0.014	0.009 - 0.012
MT3115	0.3760 - 0.3860	0.015	0.009 - 0.012
MT3116	0.4014 - 0.4114	0.016	0.009 - 0.012
MT3117	0.4268 - 0.4368	0.017	0.009 - 0.012
MT3118	0.4522 - 0.4622	0.018	0.009 - 0.012
MT3119	0.4776 - 0.4876	0.019	0.009 - 0.012
MT3120	0.5030 - 0.5130	0.020	0.009 - 0.012
MT3121	0.5284 - 0.5384	0.021	0.009 - 0.012
MT3122	0.5538 - 0.5638	0.022	0.009 - 0.012
MT3123	0.5792 - 0.5892	0.023	0.009 - 0.012

	"A"	Size in Inch	Coutersink "B"
MT3124	0.6046 - 0.6146	0.024	0.009 - 0.012
MT3125	0.6300 - 0.6400	0.025	0.009 - 0.012
MT3126	0.6554 - 0.6654	0.026	0.009 - 0.012
MT3127	0.6808 - 0.6908	0.027	0.009 - 0.012
MT3128	0.7062 - 0.7162	0.028	0.009 - 0.012
MT3129	0.7316 - 0.7416	0.029	0.009 - 0.012
MT3130	0.7570 - 0.7670	0.03	0.009 - 0.012
MT3131	0.7824 - 0.7924	0.031	0.009 - 0.012
MT3132	0.8078 - 0.8178	0.032	0.009 - 0.012
MT3133	0.8332 - 0.8432	0.033	0.009 - 0.012
MT3134	0.8636 - 0.8736	0.034	0.009 - 0.012
MT3135	0.8840 - 0.8940	0.035	0.009 - 0.012
MT3136	0.9094 - 0.9194	0.036	0.009 - 0.012
MT3137	0.9398 - 0.9498	0.037	0.009 - 0.012
MT3138	0.9602 - 0.9702	0.038	0.009 - 0.012
MT3139	0.9906 - 1.0006	0.039	0.009 - 0.012
MT3140	1.0110 - 1.0210	0.040	0.009 - 0.012
MT3141	1.0364 - 1.0464	0.041	0.009 - 0.012
MT3142	1.0618 - 1.0718	0.042	0.009 - 0.012
MT3143	1.0872 - 1.0972	0.043	0.009 - 0.012
MT3144	1.1126 - 1.1226	0.044	0.009 - 0.012
MT3145	1.1380 - 1.1480	0.045	0.009 - 0.012

Notes:

1. Vee side to visually flat.
2. Edges to be round (visually) and free of scratches.
3. No chips, scratches or internal defects allowed around the ID of the part.

DWG. NO. **SEE CHART**

DWG. Name. **Orifice**

SIZE	Description:	REV.
A	Orifice	A

Microlap Technologies Inc.



213 1st ST NW - POBOX 280
Rolla, ND 58367
701-477-3193(P) - 701-477-6579 (F)
WWW.microlap.com

FINISH:
**Vee & Vee side - Polish 2X
ID & Flat Side - Polish 20X
OD - Ground**

MATERIAL: **RUBY**

Dimensions are all in mm

	NAME	DATE
DRAWN	MJA	4/24/2019
CHECKED	DG	12/5/2019
MFG APPR.	CA	12/5/2019
Q.A.	DA	12/5/2019

PROPRIETARY AND CONFIDENTIAL

This drawing and the information contained in the specifications are the exclusive and proprietary property of Microlap Technologies, Inc. This information and materials shall not be disclosed, divulged, reproduced, copied or used in any manner without the express written authorization of Microlap Technologies, Inc. All copies, reproductions, or other duplications of any portion of this information or materials shall include this legend.

SCALE:20:1 DO NOT SCALE DRAWING SHEET 2 OF 2