

SECTION H-I

Notes:

1. Vee side to visually flat.
2. Edges to be round (visually) and free of scratches.
3. No chips, scratches or internal defects allowed around the ID of the part.

DWG. NO. SEE CHART

DWG. Name. Orifice

SIZE Description: Orifice REV. A

Microlap Technologies Inc.



213 1st ST NW - POBOX 280
Rolla, ND 58367
701-477-3193(P) - 701-477-6579 (F)
WWW.microlap.com

FINISH:
Vee & Vee side - Polish 2X
ID & Flat Side - Polish 20X
OD - Ground

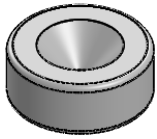
MATERIAL: Sapphire

Dimensions are all in mm

	NAME	DATE
DRAWN	MJA	4/24/2019
CHECKED	DG	12/5/2019
MFG APPR.	CA	12/5/2019
Q.A.	DA	12/5/2019

PROPRIETARY AND CONFIDENTIAL
This drawing and the information contained in the specifications are the exclusive and proprietary property of Microlap Technologies, Inc. This information and materials shall not be disclosed, divulged, reproduced, copied or used in any manner without the express written authorization of Microlap Technologies, Inc. All copies, reproductions, or other duplications of any portion of this information or materials shall include this legend.

SCALE:20:1 DO NOT SCALE DRAWING SHEET 1 OF 2



	"A"	Size in Inch	Coutersink "B"
MT3002	0.0458 - 0.0558	0.002	0.004 - 0.007
MT3003	0.0712 - 0.0812	0.003	0.004 - 0.007
MT3004	0.0966 - 0.1066	0.004	0.004 - 0.007
MT3005	0.1220 - 0.1320	0.005	0.004 - 0.007
MT3006	0.1474 - 0.1574	0.006	0.004 - 0.007
MT3007	0.1728 - 0.1828	0.007	0.004 - 0.007
MT3008	0.1980 - 0.2082	0.008	0.004 - 0.007
MT3009	0.2236 - 0.2336	0.009	0.009 - 0.012
MT3010	0.2490 - 0.2590	0.010	0.009 - 0.012
MT3011	0.2744 - 0.2844	0.011	0.009 - 0.012
MT3012	0.2998 - 0.3098	0.012	0.009 - 0.012
MT3013	0.3252 - 0.3352	0.013	0.009 - 0.012
MT3014	0.3506 - 0.3606	0.014	0.009 - 0.012
MT3015	0.3760 - 0.3860	0.015	0.009 - 0.012
MT3016	0.4014 - 0.4114	0.016	0.009 - 0.012
MT3017	0.4268 - 0.4368	0.017	0.009 - 0.012
MT3018	0.4522 - 0.4622	0.018	0.009 - 0.012
MT3019	0.4776 - 0.4876	0.019	0.009 - 0.012
MT3020	0.5030 - 0.5130	0.020	0.009 - 0.012
MT3021	0.5284 - 0.5384	0.021	0.009 - 0.012
MT3022	0.5538 - 0.5638	0.022	0.009 - 0.012
MT3023	0.5792 - 0.5892	0.023	0.009 - 0.012

	"A"	Size in Inch	Coutersink "B"
MT3024	0.6046 - 0.6146	0.024	0.009 - 0.012
MT3025	0.6300 - 0.6400	0.025	0.009 - 0.012
MT3026	0.6554 - 0.6654	0.026	0.009 - 0.012
MT3027	0.6808 - 0.6908	0.027	0.009 - 0.012
MT3028	0.7062 - 0.7162	0.028	0.009 - 0.012
MT3029	0.7316 - 0.7416	0.029	0.009 - 0.012
MT3030	0.7570 - 0.7670	0.03	0.009 - 0.012
MT3031	0.7824 - 0.7924	0.031	0.009 - 0.012
MT3032	0.8078 - 0.8178	0.032	0.009 - 0.012
MT3033	0.8332 - 0.8432	0.033	0.009 - 0.012
MT3034	0.8636 - 0.8736	0.034	0.009 - 0.012
MT3035	0.8840 - 0.8940	0.035	0.009 - 0.012
MT3036	0.9094 - 0.9194	0.036	0.009 - 0.012
MT3037	0.9398 - 0.9498	0.037	0.009 - 0.012
MT3038	0.9602 - 0.9702	0.038	0.009 - 0.012
MT3039	0.9906 - 1.0006	0.039	0.009 - 0.012
MT3040	1.0110 - 1.0210	0.040	0.009 - 0.012
MT3041	1.0364 - 1.0464	0.041	0.009 - 0.012
MT3042	1.0618 - 1.0718	0.042	0.009 - 0.012
MT3043	1.0872 - 1.0972	0.043	0.009 - 0.012
MT3044	1.1126 - 1.1226	0.044	0.009 - 0.012
MT3045	1.1380 - 1.1480	0.045	0.009 - 0.012

Notes:

1. Vee side to visually flat.
2. Edges to be round (visually) and free of scratches.
3. No chips, scratches or internal defects allowed around the ID of the part.

DWG. NO. **SEE CHART**

DWG. Name. **Orifice**

SIZE	Description:	REV.
A	Orifice	A

Microlap Technologies Inc.



213 1st ST NW - POBOX 280
Rolla, ND 58367
701-477-3193(P) - 701-477-6579 (F)
WWW.microlap.com

FINISH:
**Vee & Vee side - Polish 2X
ID & Flat Side - Polish 20X
OD - Ground**

MATERIAL: **Sapphire**

Dimensions are all in mm

	NAME	DATE
DRAWN	MJA	4/24/2019
CHECKED	DG	12/5/2019
MFG APPR.	CA	12/5/2019
Q.A.	DA	12/5/2019

PROPRIETARY AND CONFIDENTIAL

This drawing and the information contained in the specifications are the exclusive and proprietary property of Microlap Technologies, Inc. This information and materials shall not be disclosed, divulged, reproduced, copied or used in any manner without the express written authorization of Microlap Technologies, Inc. All copies, reproductions, or other duplications of any portion of this information or materials shall include this legend.

SCALE:20:1 | DO NOT SCALE DRAWING | SHEET 2 OF 2